



GSI and General Scanning are registered trademarks.

CRS Series Interface Drawings

General Scanning Optical Scanners



The information contained in this document is the sole property of GSI Group, Inc.

The disclosure of this information does not constitute the release of any proprietary rights therein. Permission to reproduce this information or the products disclosed herein must be obtained in writing from GSI Group, Inc.

References found in this document to prior companies and division names such as General Scanning Inc., GSI Lumonics, and GMAX, now refer to General Scanning Optical Scanners, a member of GSI Group, Inc.

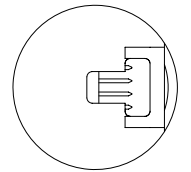
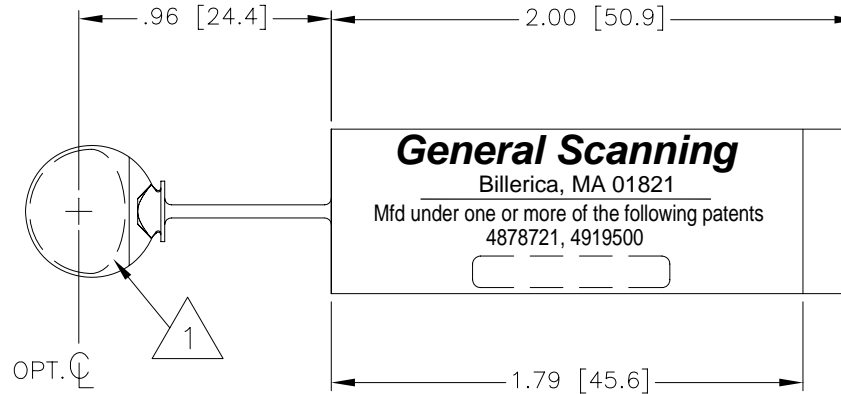
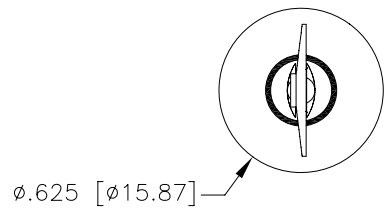
Contact Information

| | AMERICAS | EUROPE | ASIA |
|--|--|--|--|
| | 39 Manning Road Billerica, MA 01821 U.S.A. | Max-Planck-Str. 10 85716 Unterschleissheim Germany | Technoport Kamata, 16-1 Minami-Kamata 2-Chrome Ohta-Ku Tokyo 144-0035, Japan |
| | TEL: +1 (978) 439-5511 | TEL: +49 (89) 31707-0 | TEL: [Sales] +81 (3) 5425-7733 |
| | FAX: +1 (978) 663-0131 | FAX: +49 (89) 31707-250 | TEL: [Service] +81 (3) 5714-0557 |
| | E-mail: ScannerSales-Americas@gsig.com | E-mail: ScannerSales-Europe@gsig.com | FAX: [Sales] +81 (3) 5425-7738 |
| | Toll Free: +1 (800) 342-3757 | | FAX: [Service] +81 (3) 5714-0566 |
| | | | E-mail: ScannerSales-Asia@gsig.com |

NOTES:

1 CLEAR APPERTURE: TOP HALF IS HALF CIRCLE R.236;
 BOTTOM HALF IS HALF ELLIPSE .472 x .128

| REVISIONS | | | | |
|-----------|-----|--------------------------|----------|----------|
| ZONE | REV | DESCRIPTION | DATE | APPROVED |
| - | H | REVISED PER ECD 2006-661 | 10/30/06 | A.S. |



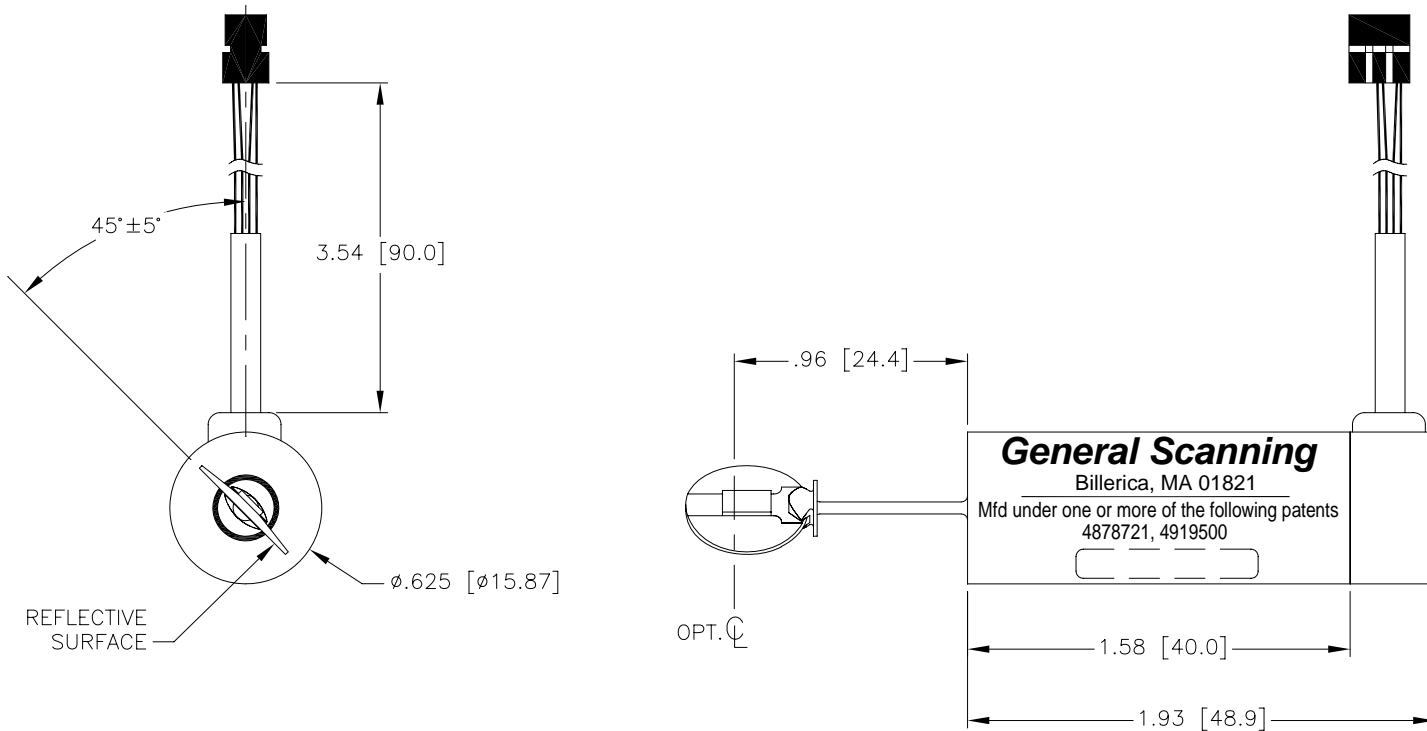
UNLESS OTHERWISE SPECIFIED:
 DIMENSIONS ARE IN INCHES
 TOLERANCES ARE:
 .X ± .1
 .XX ± .01
 .XXX ± .005
 .XXXX ± .0010
 ANGLES ± .5°
 DO NOT SCALE DRAWING
 REMOVE ALL BURRS AND BREAK
 SHARP EDGES 63/

| | | | | | |
|---|--|---|--|--|---------------------|
| INTERPRET DRAWING IN ACCORDANCE WITH DOD-STD-100, ANSI Y14.5M | | UNLESS OTHERWISE SPECIFIED: DIMENSIONS ARE IN MILLIMETERS. TOLERANCES ARE: X ± 2.5 XX ± .13 XXX ± .025 XXXX ± .01 ANGLES ± .5° | | GSI Group Corporation Precision Motion Division 39 Manning Road, Billerica, MA 01821 | |
| PROPERTY OF GSI LUMONICS THIS DOCUMENT IS AND SHALL REMAIN AN UNPUBLISHED WORK OF GSI LUMONICS PROTECTED BY COPYRIGHT, IS LOANED FOR LIMITED PURPOSES ONLY, REMAINS THE PROPERTY OF GSI LUMONICS, AND IS TO BE RETURNED UPON REQUEST. NEITHER IT NOR ANY OF THE INFORMATION IT CONTAINS WILL BE REPRODUCED, USED, OR DISCLOSED TO ANYONE NOT HAVING A NEED-TO-KNOW CONSISTENT WITH THE PURPOSE OF THE LOAN, WITHOUT WRITTEN CONSENT OF GSI LUMONICS. | | DO NOT SCALE DRAWING REMOVE ALL BURRS AND BREAK SHARP EDGES ALL MACHINED SURFACES 1.6 MICRON RA | | DRAWN A. SUKHOV 01-28-99 DESIGN ENG P. MCCOVEREN 02-09-95 MFG ENG G. POLUCHI 02-23-95 | OUTLINE CRS 4kHz |
| THIRD ANGLE PROJECTION | | CAD FILE NAME: 15980 | | SIZE B | CAGE CODE 57246 |
| | | | | DWG NO. 3CD-15980 | REV H |
| | | SCALE 2/1 | | SHEET 1 OF 1 | |

NOTES:

1.

| REVISIONS | | | | |
|-----------|-----|--------------------------|----------|----------|
| ZONE | REV | DESCRIPTION | DATE | APPROVED |
| - | G | REVISED PER ECD 2006-661 | 10/30/06 | A.S. |



General Scanning
 Billerica, MA 01821
 Mfd under one or more of the following patents
 4878721, 4919500

UNLESS OTHERWISE SPECIFIED:
 DIMENSIONS ARE IN INCHES
 TOLERANCES ARE:
 .X ± .1
 .XX ± .01
 .XXX ± .005
 .XXXX ± .0010
 ANGLES ± .5°
 DO NOT SCALE DRAWING
 REMOVE ALL BURRS AND BREAK
 SHARP EDGES
 ALL MACH SURFACES 6.3/√

INTERPRET DRAWING IN ACCORDANCE
 WITH DOD-STD-100, ANSI Y14.5M

PROPERTY OF GSI LUMONICS
 THIS DOCUMENT IS AND SHALL REMAIN AN
 UNPUBLISHED WORK OF GSI LUMONICS
 PROTECTED BY COPYRIGHT, IS LOANED FOR
 LIMITED PURPOSES ONLY, REMAINS THE
 PROPERTY OF GSI LUMONICS, AND IS TO BE
 RETURNED UPON REQUEST. NEITHER IT NOR
 ANY OF THE INFORMATION IT CONTAINS WILL BE
 REPRODUCED, USED, OR DISCLOSED TO ANYONE
 NOT HAVING A NEED-TO-KNOW CONSISTENT
 WITH THE PURPOSE OF THE LOAN, WITHOUT
 WRITTEN CONSENT OF GSI LUMONICS.

UNLESS OTHERWISE SPECIFIED
 DIMENSIONS ARE IN MILLIMETERS.
 TOLERANCES ARE:
 X ± 2.5
 .X ± .25
 .XX ± .13
 .XXX ± .025
 ANGLES ± .5°
 DO NOT SCALE DRAWING
 REMOVE ALL BURRS AND BREAK
 SHARP EDGES
 ALL MACHINED SURFACES 1.6 MICRON Ra

THIRD ANGLE PROJECTION

| | | |
|------------|--|---------|
| DRAWN | | 3-16-00 |
| A. SUKHOV | | |
| DESIGN ENG | | 8-11-06 |
| P. OTAVSKY | | |
| MFG ENG | | 8-11-06 |
| A.SUKHOV | | |

GSI Group Corporation
 Precision Motion Division
 39 Manning Road, Billerica, MA 01821

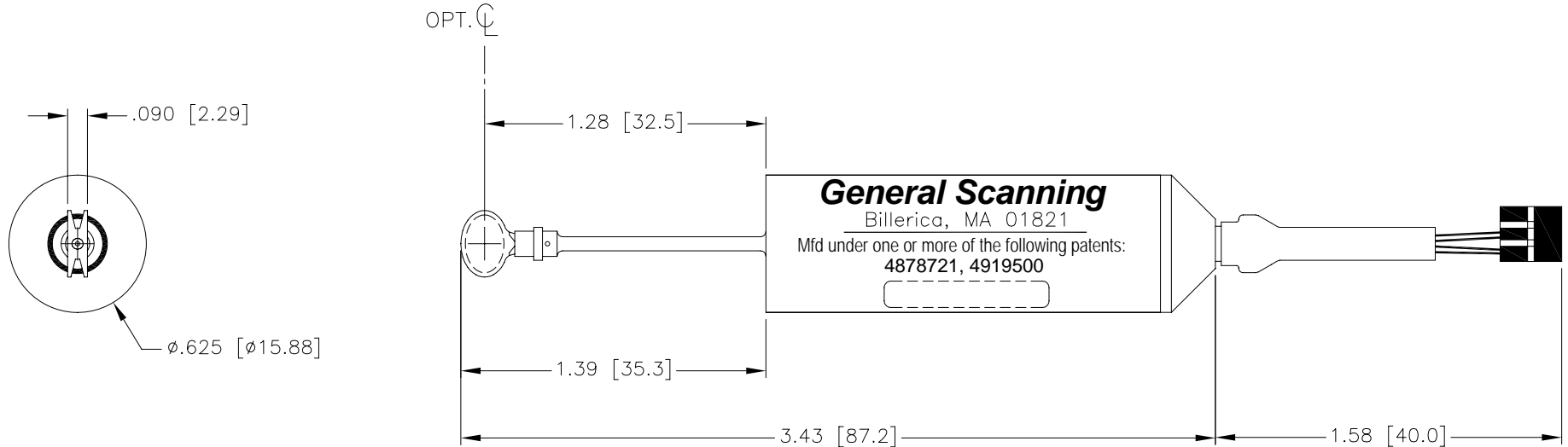
OUTLINE
 CRS 4kHz

| | | | |
|-------|-----------|-----------|--------------|
| SIZE | CAGE CODE | DWG NO. | REV |
| B | 57246 | 7CD-76529 | G |
| SCALE | 4/1 | | SHEET 1 OF 1 |

NOTES:

1. MIRROR IS 5.5mm x 7.8mm ELLIPSE
2. CLEAR APERTURE IS 4mm x 6mm ELLIPSE

| REVISIONS | | | | |
|-----------|-----|--------------------------|----------|----------|
| ZONE | REV | DESCRIPTION | DATE | APPROVED |
| - | E | REVISED PER ECO 2006-661 | 10/30/06 | A.S. |



UNLESS OTHERWISE SPECIFIED:
 DIMENSIONS ARE IN INCHES
 TOLERANCES ARE:
 .X ± .1
 .XX ± .01
 .XXX ± .005
 .XXXX ± .0010
 ANGLES ± .5'
 DO NOT SCALE DRAWING
 REMOVE ALL BURRS AND BREAK
 SHARP EDGES 63/√
 ALL MACH SURFACES ✓

INTERPRET DRAWING IN ACCORDANCE
 WITH DOD-STD-100, ANSI Y14.5M

PROPERTY OF GSI LUMONICS
 THIS DOCUMENT IS AND SHALL REMAIN AN
 UNPUBLISHED WORK OF GSI LUMONICS
 PROTECTED BY COPYRIGHT, IS LOANED FOR
 LIMITED PURPOSES ONLY, REMAINS THE
 PROPERTY OF GSI LUMONICS, AND IS TO BE
 RETURNED UPON REQUEST. NEITHER IT NOR
 ANY OF THE INFORMATION IT CONTAINS WILL BE
 REPRODUCED, USED, OR DISCLOSED TO ANYONE
 NOT HAVING A NEED-TO-KNOW CONSISTENT
 WITH THE PURPOSE OF THE LOAN, WITHOUT
 WRITTEN CONSENT OF GSI LUMONICS.

~~UNLESS OTHERWISE SPECIFIED:
 DIMENSIONS ARE IN MILLIMETERS.
 TOLERANCES ARE:
 X ± 2.5
 .X ± .25
 .XX ± .13
 .XXX ± .025
 ANGLES ± .5'
 DO NOT SCALE DRAWING
 REMOVE ALL BURRS AND BREAK
 SHARP EDGES
 ALL MACHINED SURFACES 1.6 MICRON Ra~~

THIRD ANGLE PROJECTION

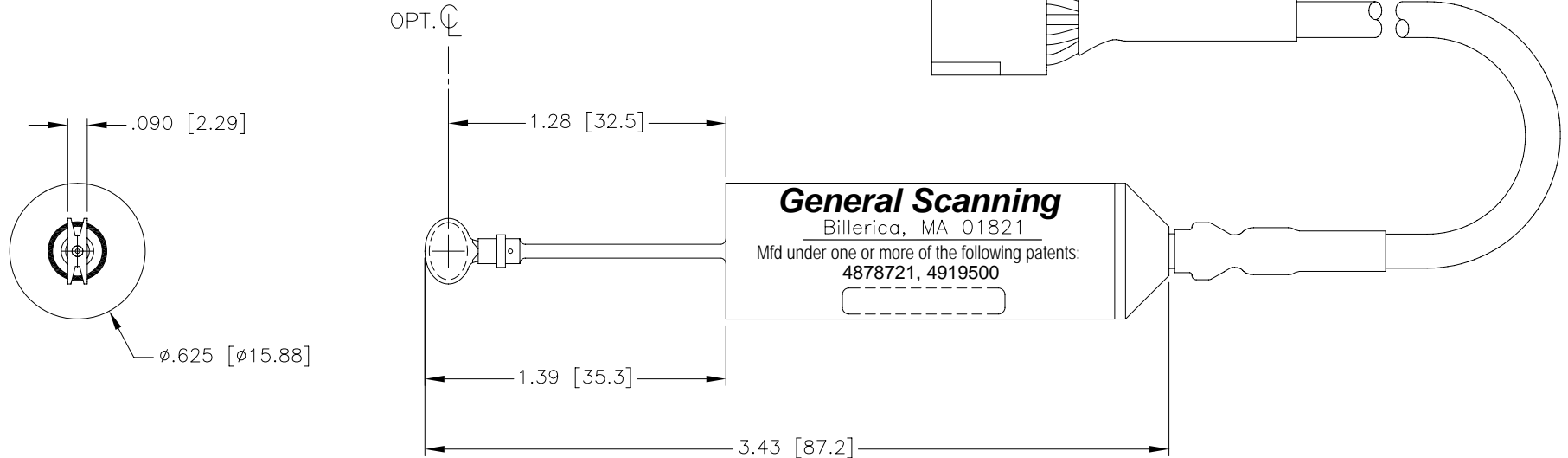
| | | | |
|-------------------------|--|------------|---------|
| DRAWN | | A. SUKHOV | 3-16-00 |
| DESIGN ENG | | P. OTAVSKY | 8-11-06 |
| MFG ENG | | A.SUKHOV | 8-11-06 |
| CAD FILE NAME: 75242 | | | |

| | | | |
|---|-----------|-----------|--------------|
| GSI Group Corporation Precision Motion Division 39 Manning Road, Billerica, MA 01821 | | | |
| OUTLINE, CRS 8kHz | | | |
| SIZE | CAGE CODE | DWG NO. | REV |
| B | 57246 | 7CD-75242 | E |
| SCALE | 2/1 | | SHEET 1 OF 1 |

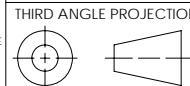
NOTES:

1. MIRROR IS 5.5mm x 7.8mm ELLIPSE
2. CLEAR APERTURE IS 4mm x 6mm ELLIPSE

| REVISIONS | | | | |
|-----------|----------|------------------|------------|----------|
| REV. | C.O. | DESCRIPTION | DATE | APPROVED |
| A | 2005-220 | RELEASED PER ECO | 8/24/2005 | A.S. |
| B | 2006-687 | REVISED PER ECO | 11/15/2006 | A.P. |



UNLESS OTHERWISE SPECIFIED:
DIMENSIONS ARE IN INCHES:
 ∠ ±0.5°
 .X: ±0.1
 .XX: ±0.01
 .XXX: ±0.005
 .XXXX: ±0.0010
 -
 ALL MACHINED SURFACES:
 63
 √



| | | |
|---|-----------|---------|
| NAME | GSI | |
| DRAWN BY: | A. SUKHOV | 8/24/05 |
| RESPONSIBLE ENGINEER: | A. SUKHOV | 8/24/05 |
| CAD GENERATED. DO NOT MANUALLY UPDATE. DO NOT SCALE DRAWING | | |
| INTERPRET DRAWING IN ACCORDANCE WITH ANSI Y14.5M | | |

| | | | |
|--|--------------------------|------------------|--------------|
| GSI Group Corporation | | | |
| Precision Motion Division 39 Manning Road, Billerica, MA. 01821 | | | |
| TITLE: OUTLINE CRS 8kHz/10kHz/12kHz | | | |
| SIZE | CAGE CODE | DWG. NO. | REV |
| B | 57246 | 730-78687 | B |
| SCALE: 1:1 | CAD FILE NAME: 78687.DWG | | SHEET 1 OF 1 |

PROPRIETARY AND CONFIDENTIAL
THE INFORMATION CONTAINED IN THIS DRAWING IS THE SOLE PROPERTY OF GSI GROUP CORPORATION. ANY REPRODUCTION IN PART OR AS A WHOLE WITHOUT THE WRITTEN PERMISSION OF GSI GROUP CORPORATION IS PROHIBITED.