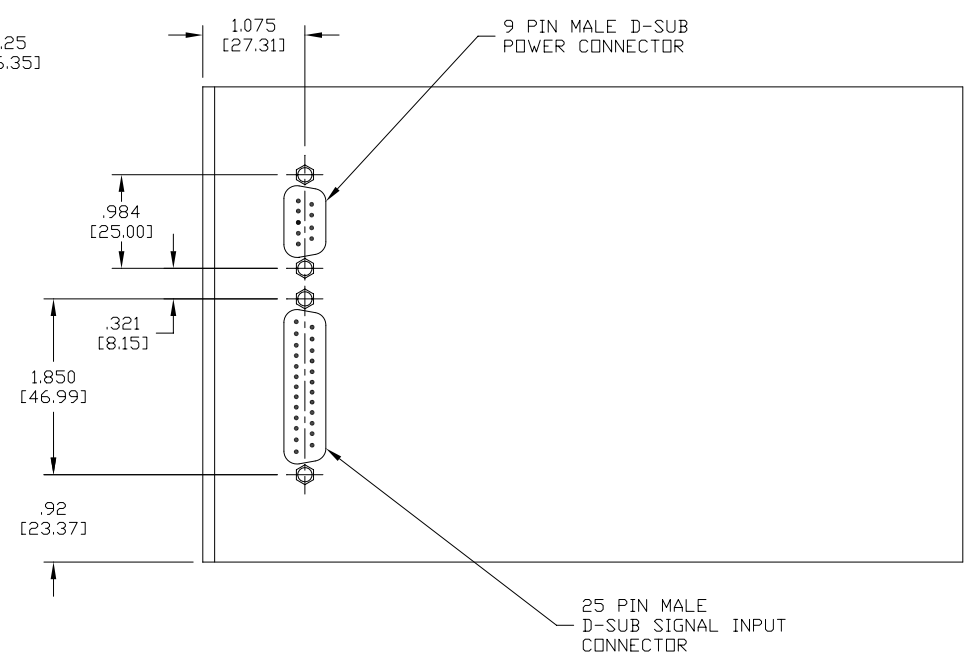
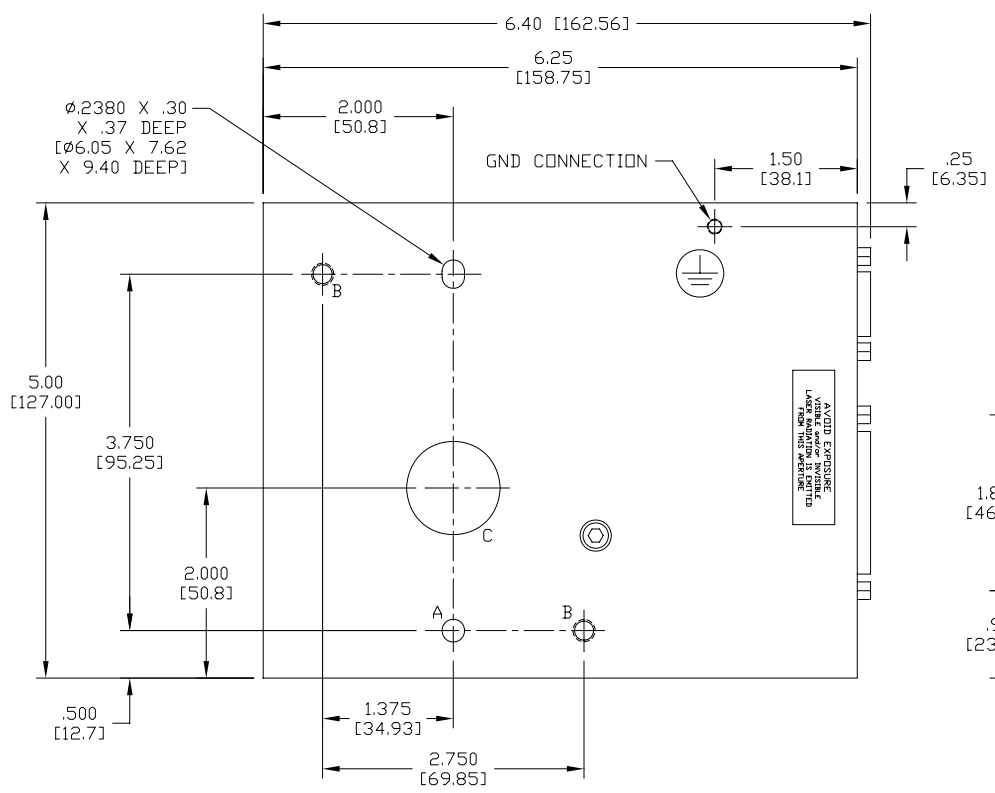
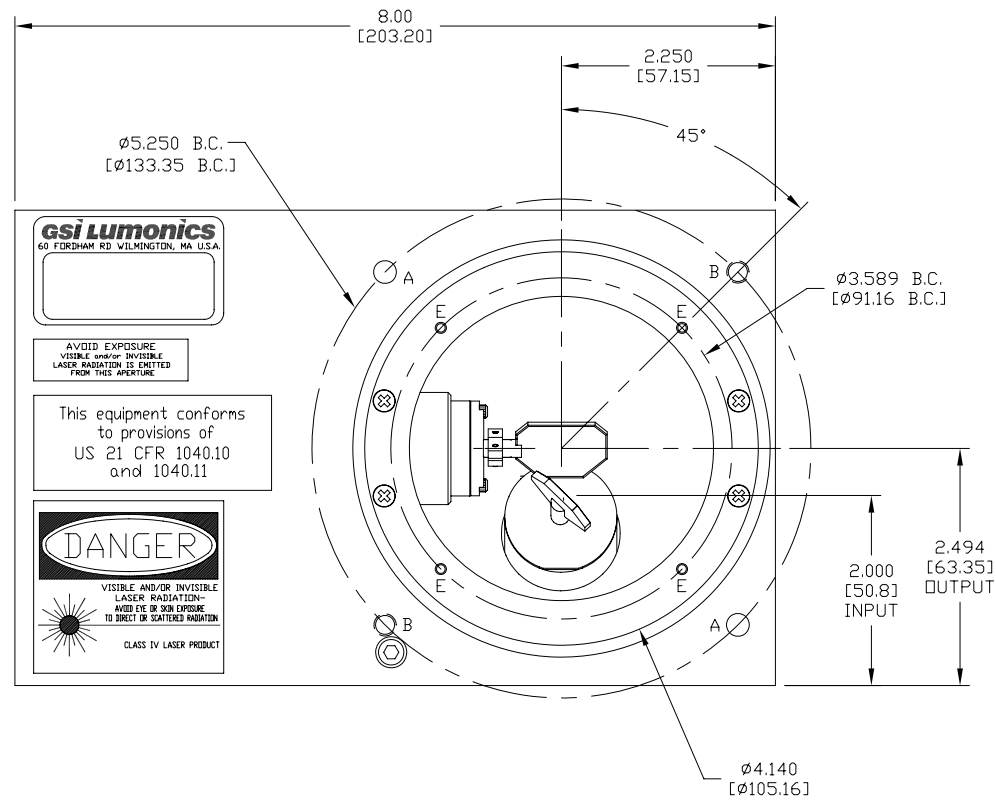
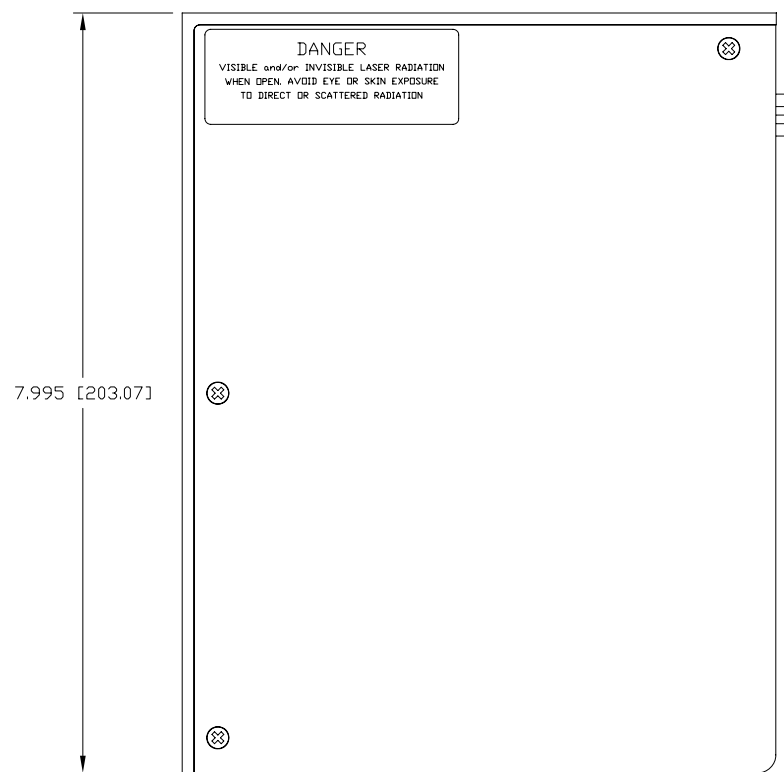


PROPERTY OF GSI LUMONICS
 This document is and shall remain an unpublished work of GSI Lumonics protected by copyright, is loaned for limited purposes only, remains the property of GSI Lumonics, and is to be returned upon request. Neither it nor any of the information it contains will be reproduced, used, or disclosed to anyone not having a need-to-know consistent with the purpose of the loan, without written consent of GSI Lumonics.

SYM	REVISION	RECORD	DATE	APPVD.
1	RELEASED TO PRE-PRD	ECN-51540		
2	REV PER ECN-51573		9/16/98	G.P.
3	REV PER ECO-8415			



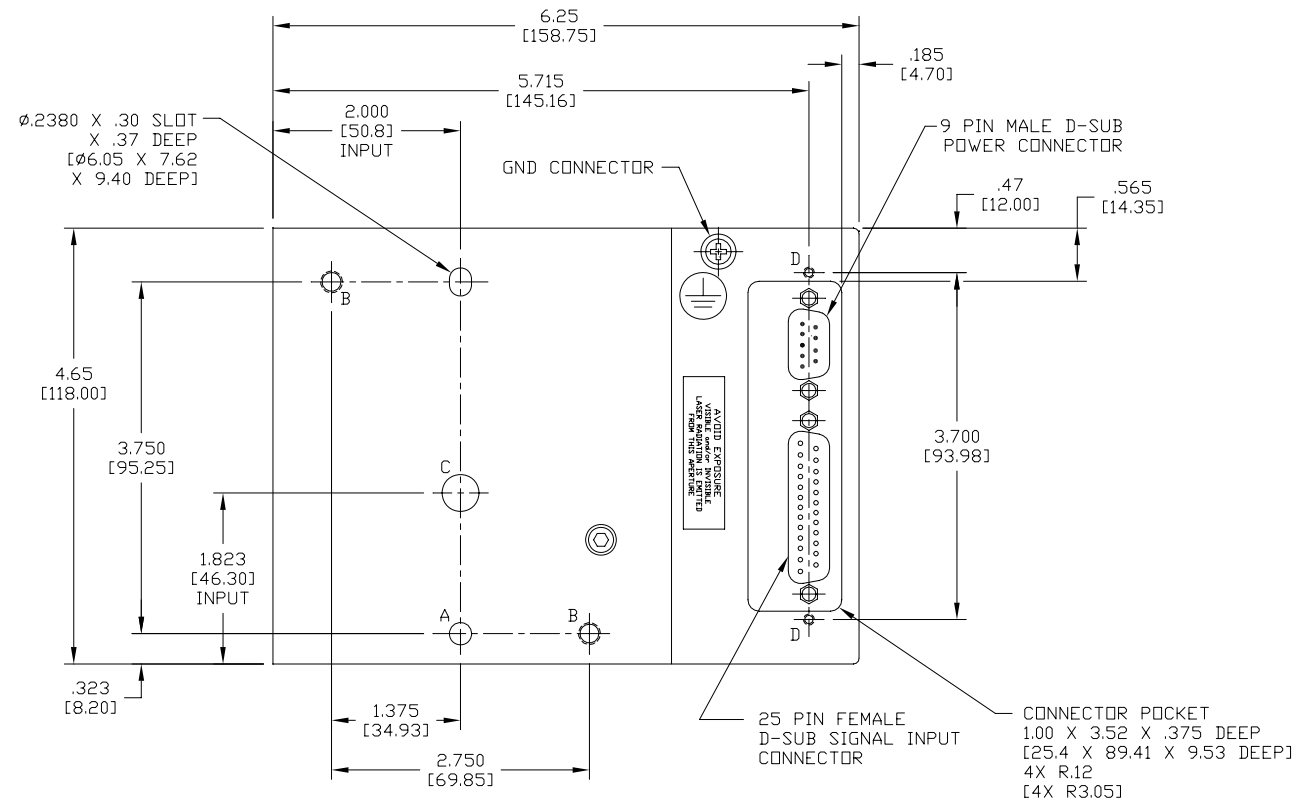
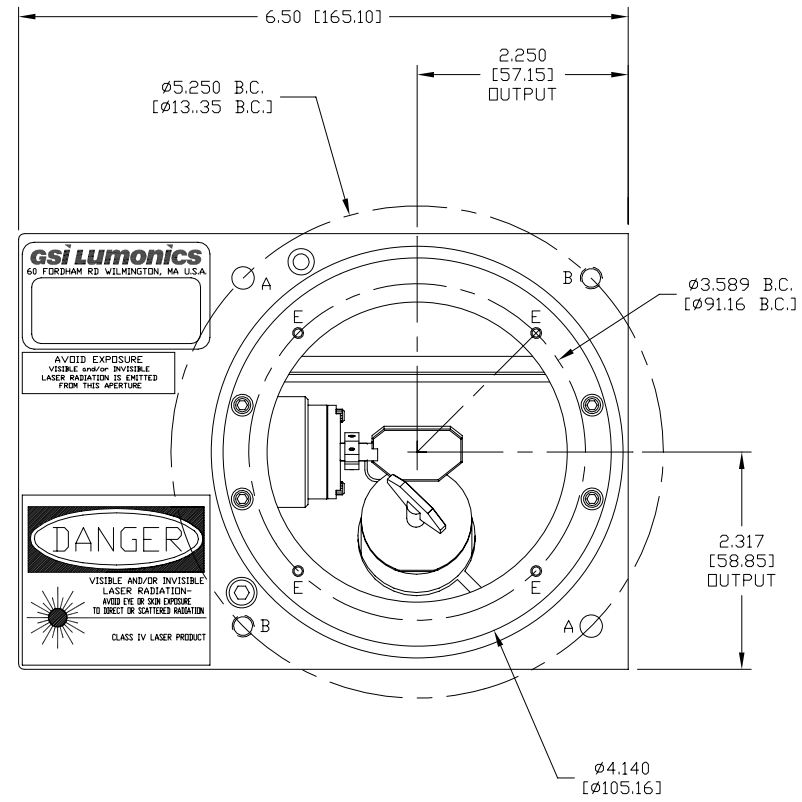
SYM	QTY	DESCRIPTION	DEPTH
A	3	$\phi 2.370/.2380$ [6.01/6.04]	.37 [9.40]
B	4	M6 X 1-6H	.37 [9.40]
C	1	$\phi .984$ [25.00] THRU	
E	4	M3 THRU	
F	1	M4	.35 [8.89]



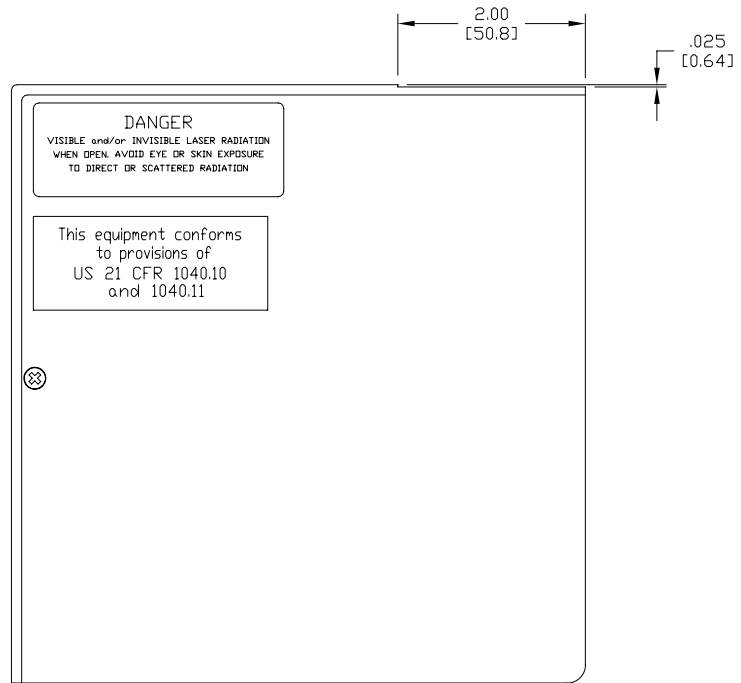
MATERIAL				TREATMENT		
UNLESS SPECIFIED*	FUNCTION	NAME	DATE	CAD FILE No.	GMAX\21024-03	FSCM No.
DIMENSIONS ARE IN INCHES	DRAWN	B.P. STONE	8/25/98	TITLE		
TOLERANCES: .XX = ± .01	CHECKER			OUTLINE, HPM10M2		
.XXX = ± .005	Q.A.			ANALOG		
.XXXX = ± .0010	DES. ENG.	G. PADLUCCI	8/27/98	GSI Lumonics		
ANG. = ± 0°30'	MFG. ENG.	G. PADLUCCI	8/27/98	SIZE	DRAWING NUMBER	REV
REMOVE ALL BURRS AND SHARP EDGES*	PRD. MGR.			D	ECD-21024	3
SCALE 1=1				WILMINGTON, MA		


PROPERTY OF GSI LUMONICS
 This document is and shall remain an unpublished work of GSI Lumonics protected by copyright. It is loaned for limited purposes only, remains the property of GSI Lumonics, and is to be returned upon request. Neither it nor any of the information it contains will be reproduced, used, or disclosed to anyone not having a need-to-know consistent with the purpose of the loan, without written consent of GSI Lumonics.

SYM	REVISION	RECORD	DATE	APPVD.
1	RELEASED TO PRE-PRD	ECD-9088		



SYM	QTY	DESCRIPTION	DEPTH
A	3	Ø.2370/.2380 [6.01/6.04] DO NOT BREAK THRU CHAMFER LEAD IN 45° X Ø.25 [Ø6.35]	.37 [9.40]
B	4	M6 X 1-6H DO NOT BREAK THRU	.37 [9.40]
C	1	Ø.394 [Ø10.00] THRU	
D	2	M3	.35 [8.89]
E	4	M3 THRU	



MATERIAL				TREATMENT		
UNLESS SPECIFIED: DIMENSIONS ARE IN INCHES TOLERANCES: .XX = ± .01 .XXX = ± .005 .XXXX = ± .0010 ANG = ± 0°30'	FUNCTION	NAME	DATE	CAD FILE No.	GMAX\21686-01	FSCM No.
REMOVE ALL BURRS AND SHARP EDGES	DRAWN	B.P. STONE	12/23/99	TITLE	OUTLINE, HPM10M2	
SCALE 1=1	DES. ENG.	MFG. ENG.	PROJ. MGR.			
				SIZE	DRAWING NUMBER	REV
				D	ECD-21686	1